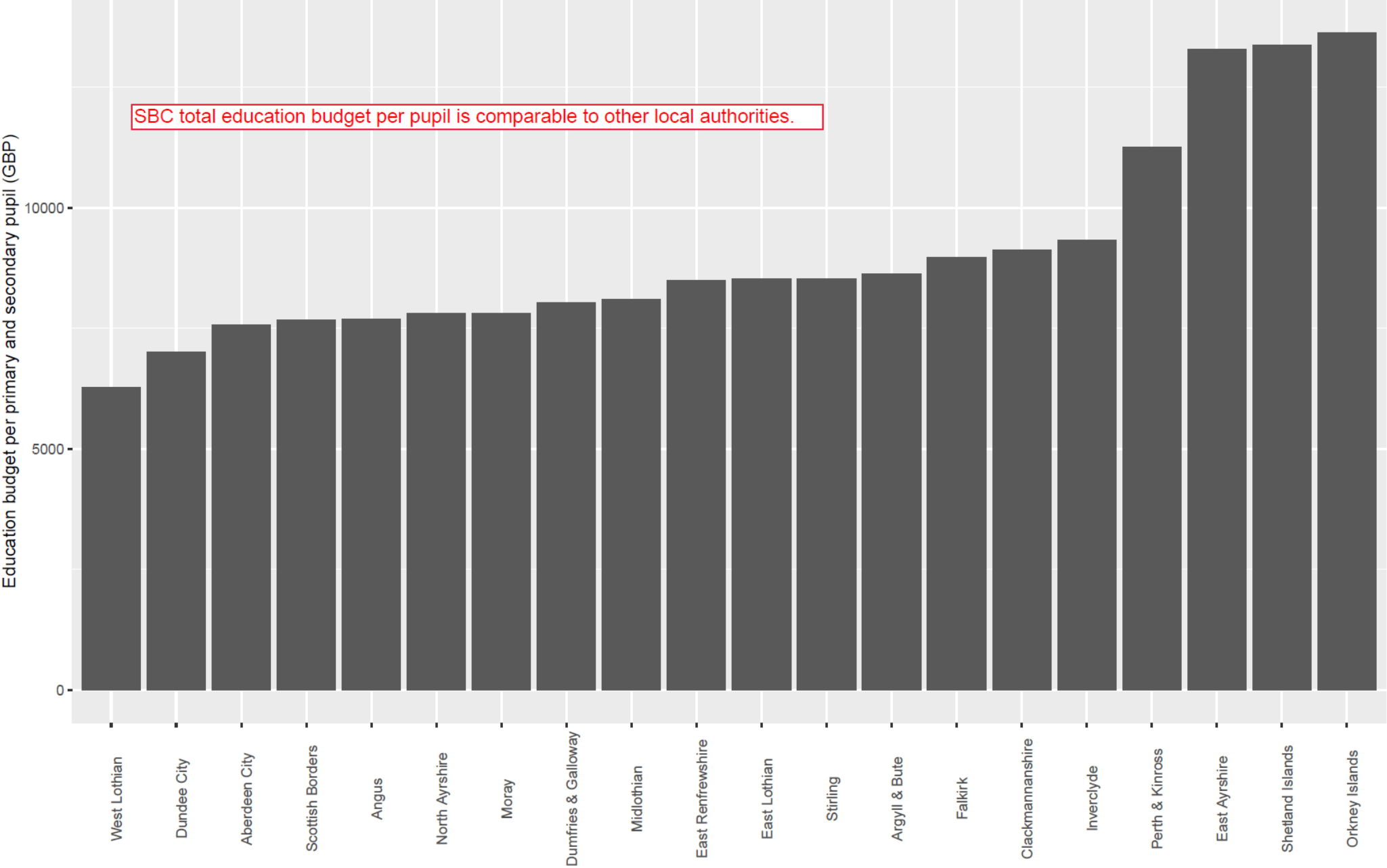


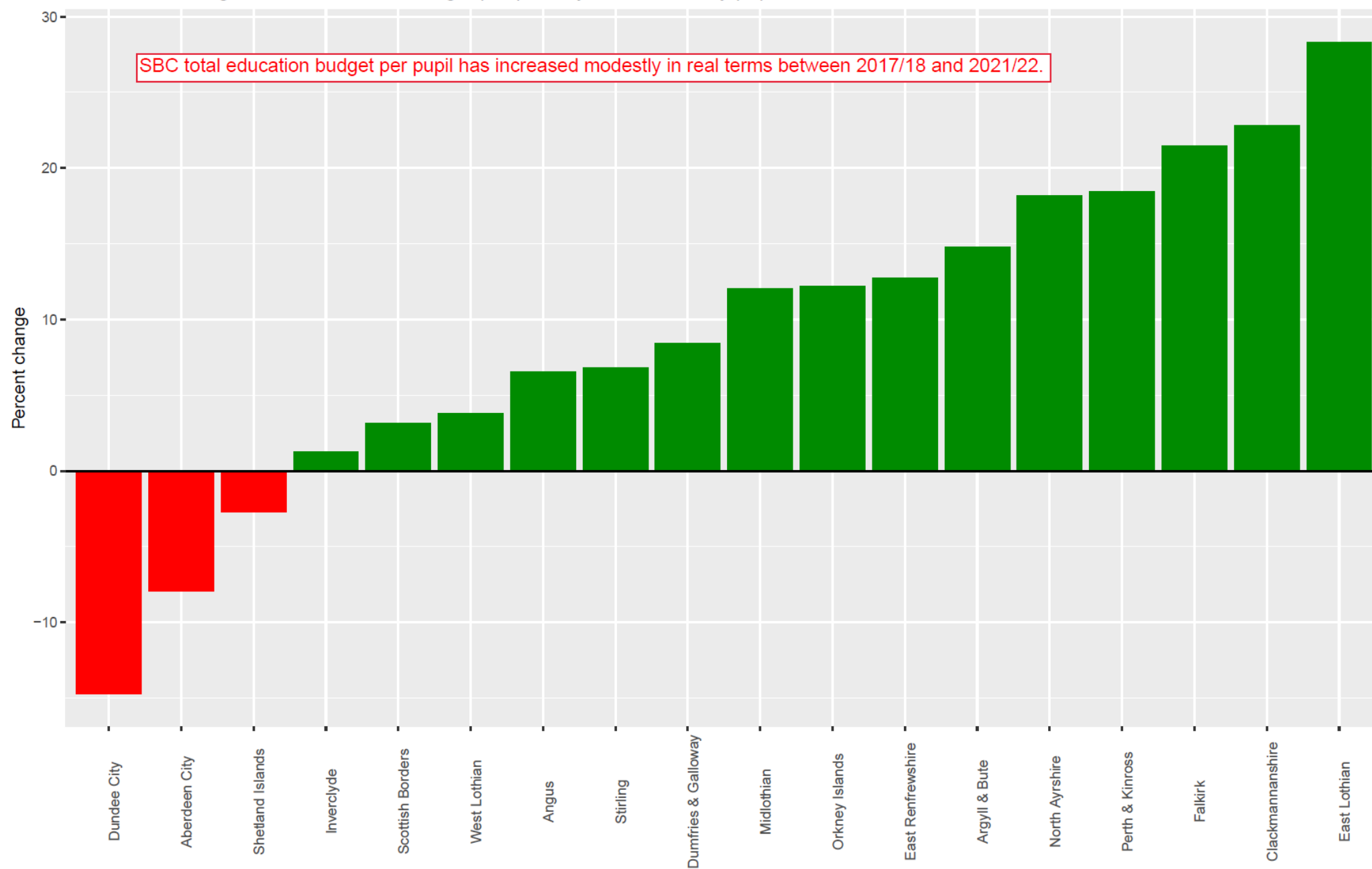
FOI data
on school funding



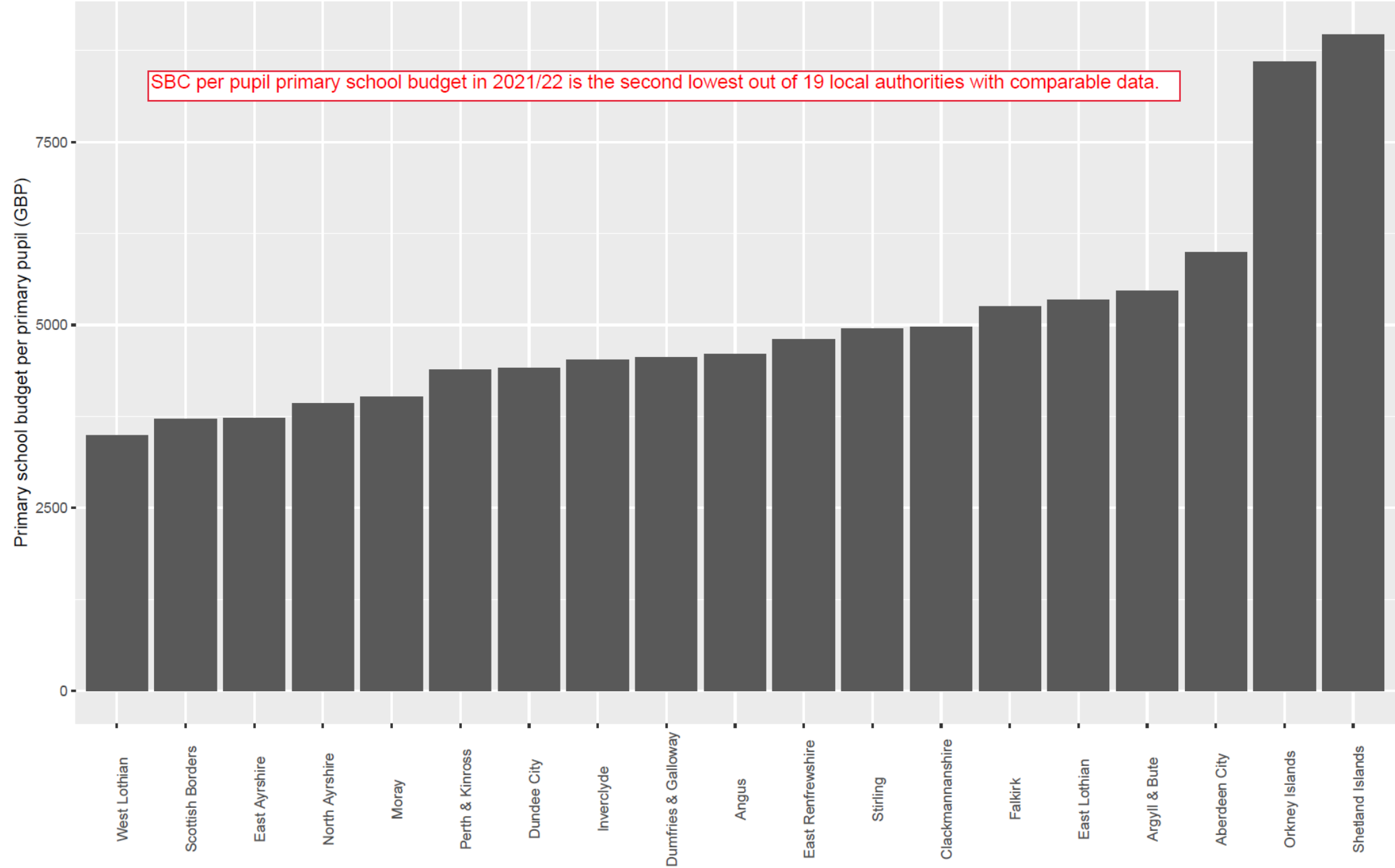
Total education budget 2021/22 (GBP)



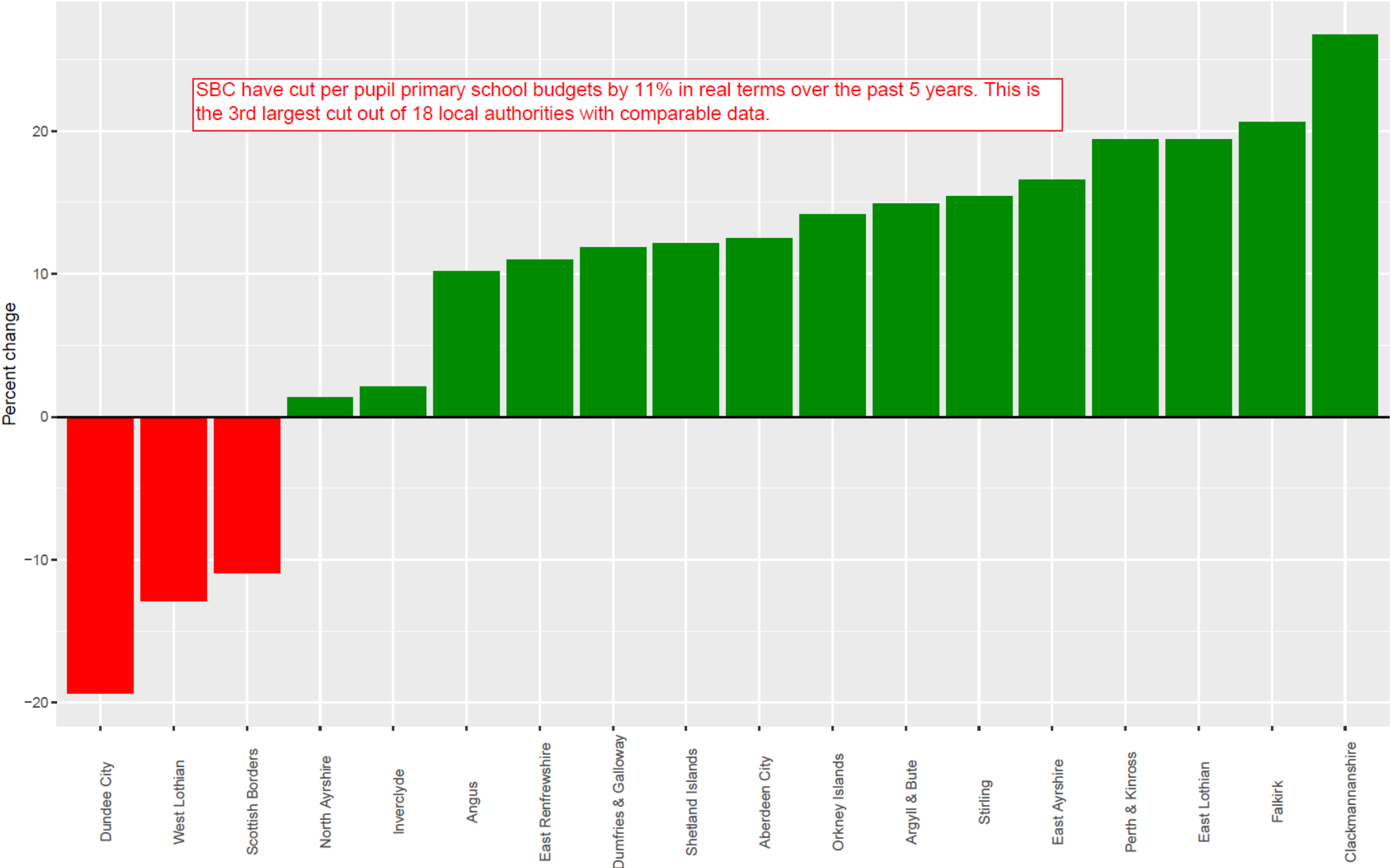
Real terms change in total education budget per primary and secondary pupil between 2017/18 and 2021/22



Primary school budget 2021/22 (GBP)

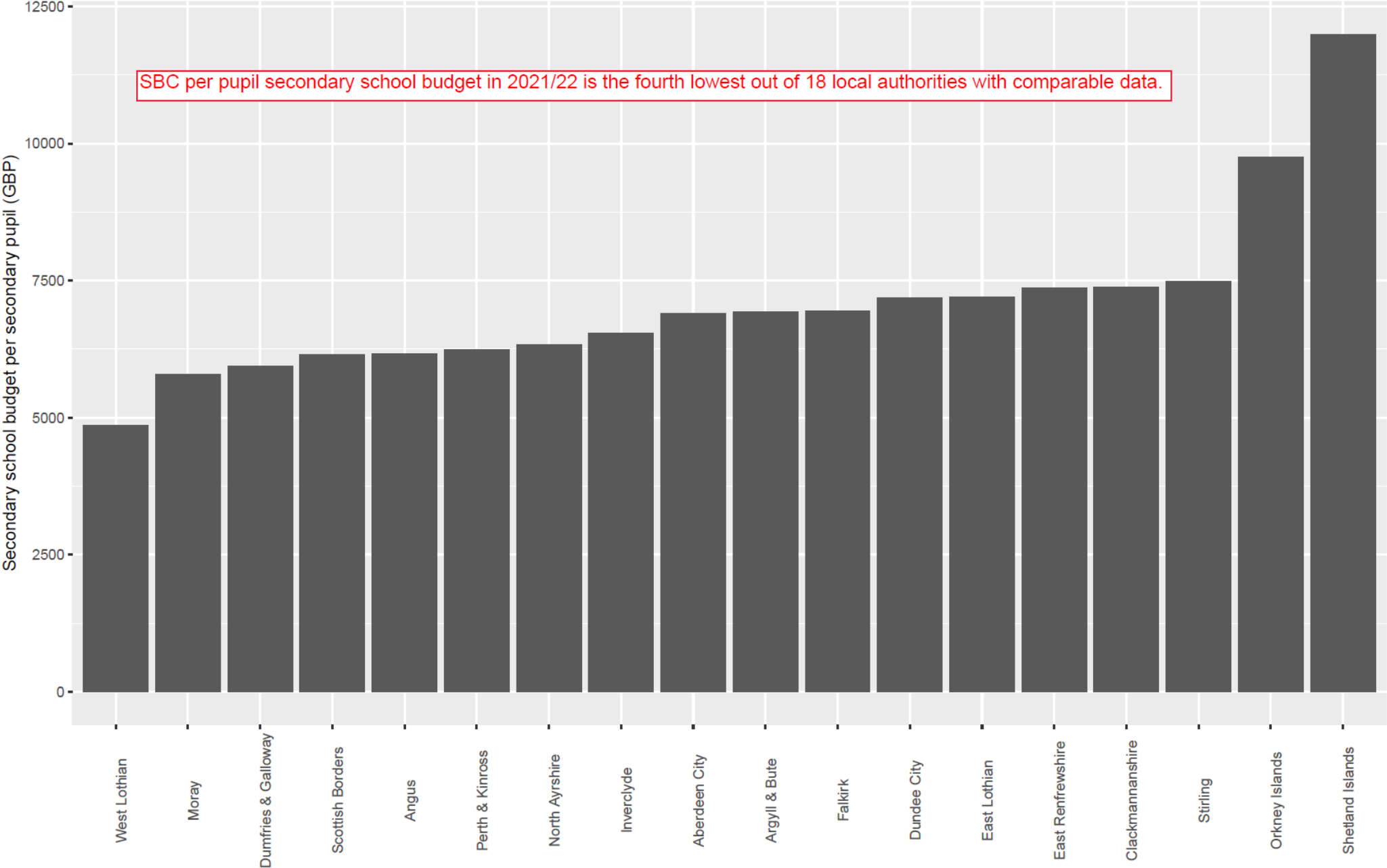


Real terms change in primary school budget per primary pupil between 2017/18 and 2021/22



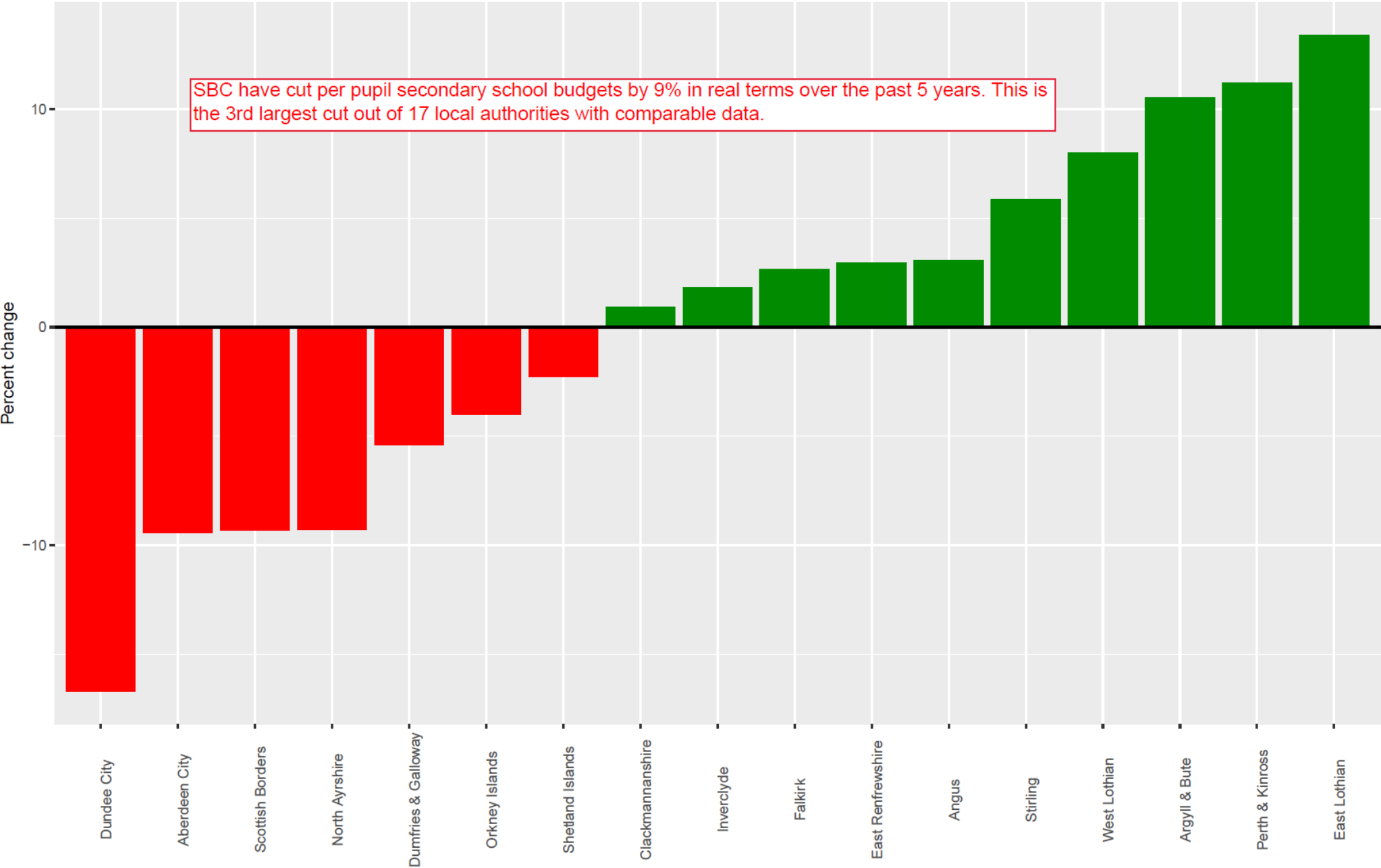
SBC have cut per pupil primary school budgets by 11% in real terms over the past 5 years. This is the 3rd largest cut out of 18 local authorities with comparable data.

Secondary school budget 2021/22 (GBP)



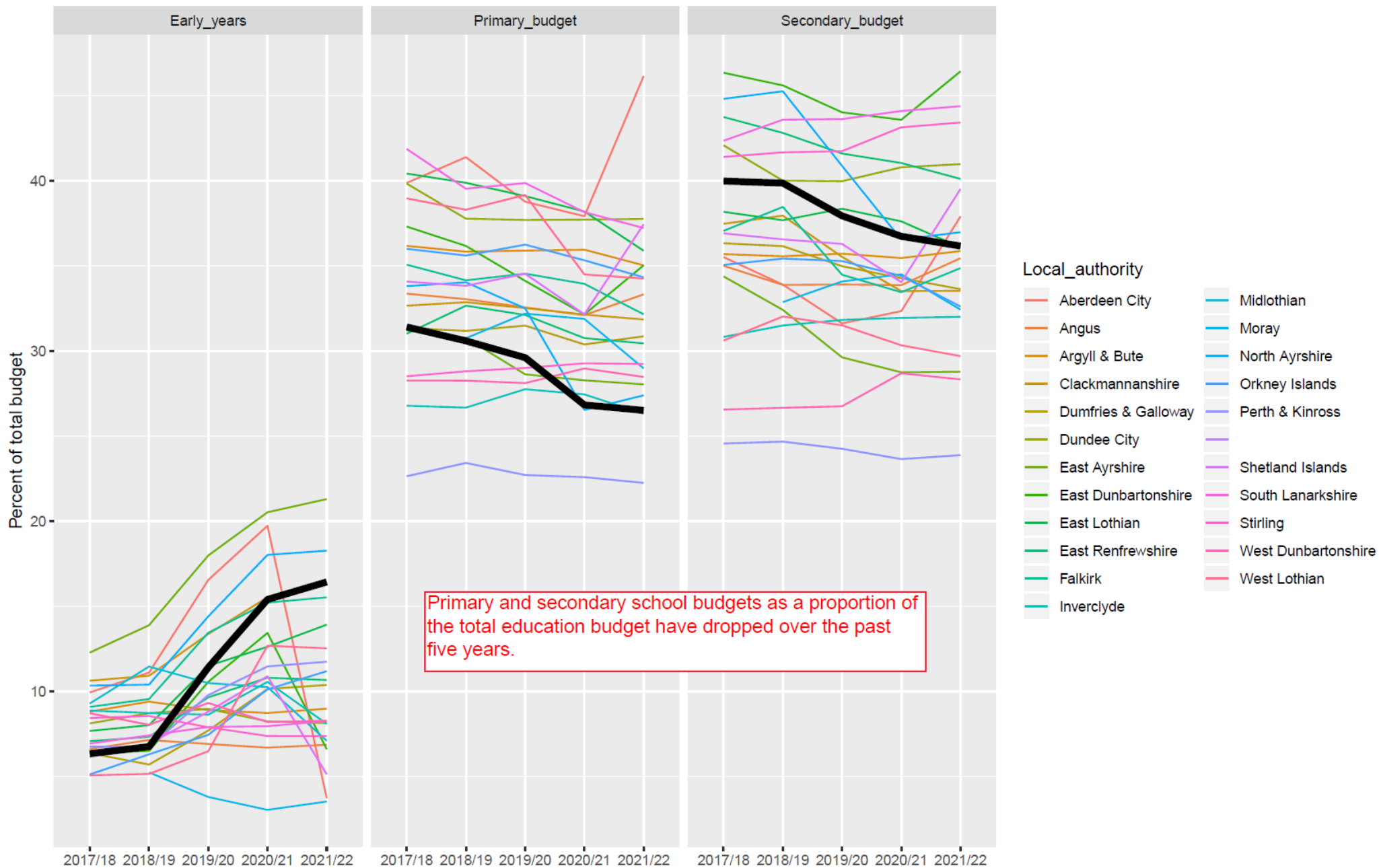
SBC per pupil secondary school budget in 2021/22 is the fourth lowest out of 18 local authorities with comparable data.

Real terms change in secondary school budget per secondary pupil between 2017/18 and 2021/22

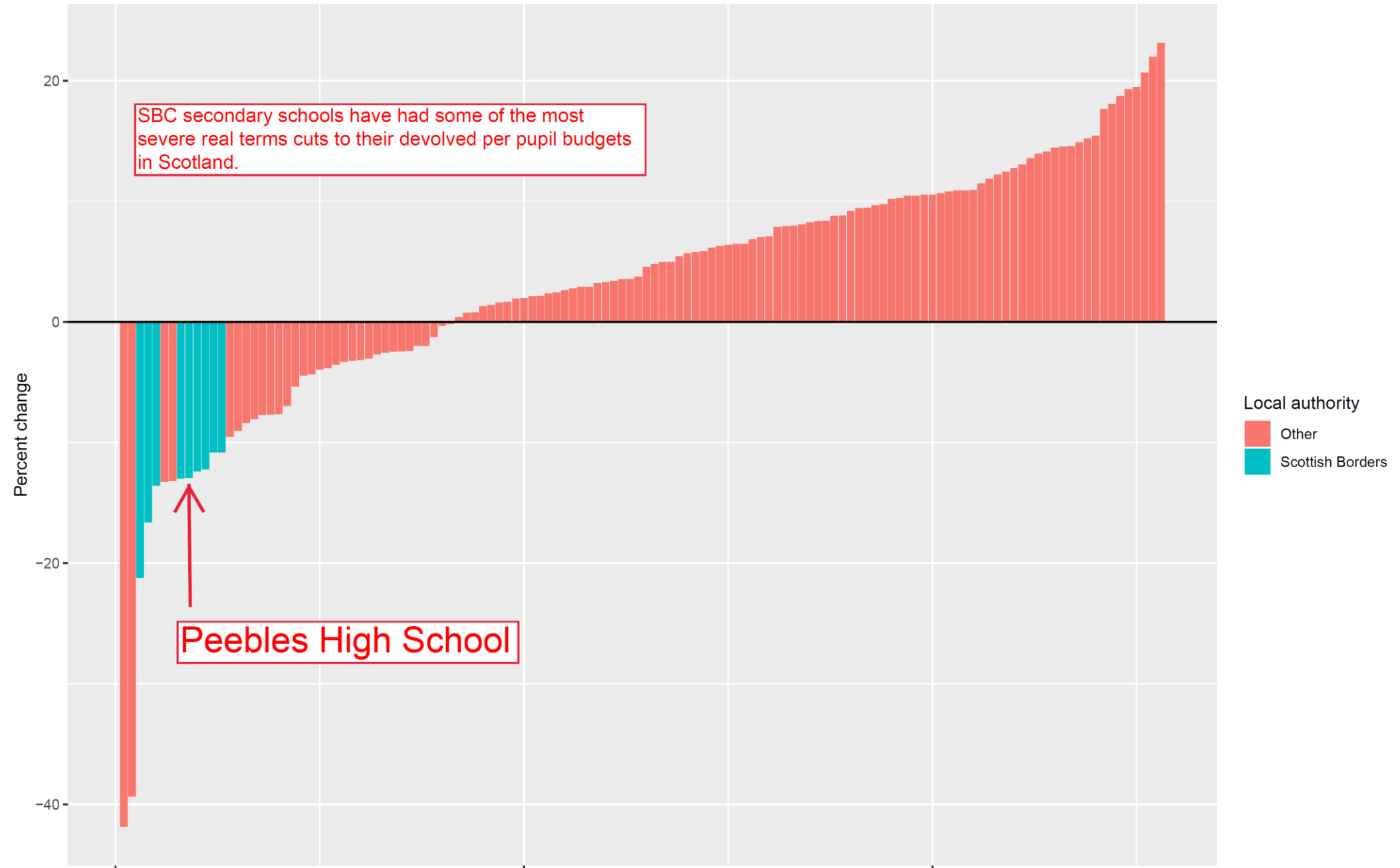


SBC have cut per pupil secondary school budgets by 9% in real terms over the past 5 years. This is the 3rd largest cut out of 17 local authorities with comparable data.

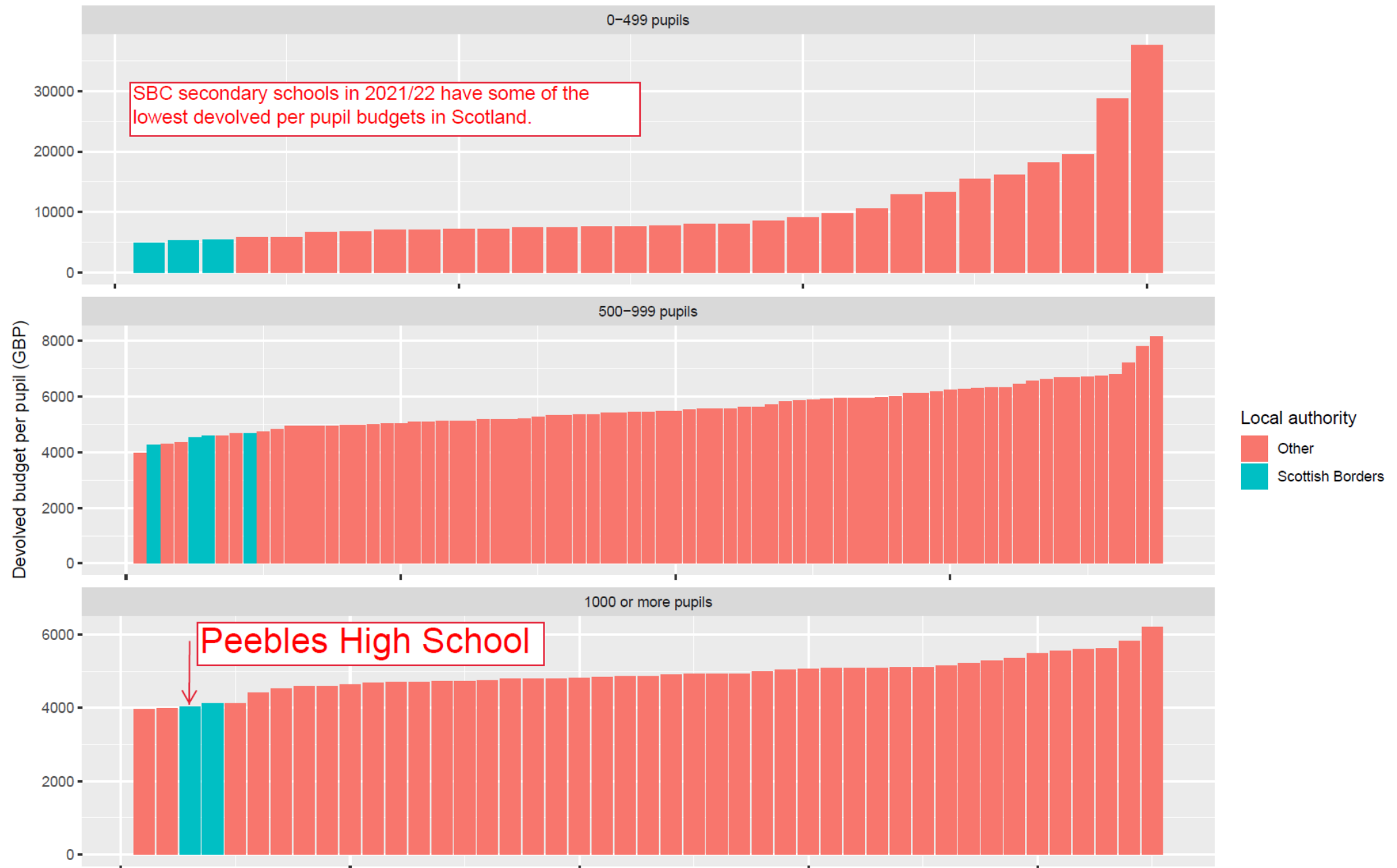
Budgets as a percentage of total education budget – SBC highlighted in black



Real terms change in devolved secondary school budget per secondary pupil between 2017/18 and 2021/22



Secondary school devolved budgets per pupil 2021/22 (GBP)



Promoted Post Allowance 2021-22

Data received from SBC February 2022

High School	PPA allowance for Head plus Deputes (SLT)	Additional SLT posts funded through DSM Budget 2021-22	Additional SLT Pots funded through Covid monies	School Roll 2021 Census	Number of pupils per SLT member of staff as per the PPA Allocation
Peebles	4	0	0	1318	330
Gala	3	0	0	837	279
Earlston	4	0	0	1068	267
Berwickshire	3	0	0	647	216
Hawick	4	0	0	787	197
Kelso	3	0	1	592	197
Jedburgh	3	0	1	350	117
Eyemouth	3	0	0	492	164
Selkirk	3	0	0	400	133
Total	30			6491	216

Note: In previous financial years PHS has funded an additional Depute post from the Devolved School Management Budget, however it was not possible to cover Mr Fagan's post while he was on secondment to Jedburgh in 2021-22 due to budget constraints

- SBC total education budget has increased modestly in real terms since 2017/18
- SBC primary school budget in 2021/22 of £3,713 per pupil is the second worst out of the local authorities who provided data, with a real terms **cut of 11%** between 2017/18 and 2021/22
- SBC secondary school budget in 2021/22 of £6,157 per pupil is the fourth worst out of the local authorities who provided data, with a real terms **cut of 9%** between 2017/18 and 2021/22
- SBC primary school budget has dropped from 31% of the total education budget to 27%, whilst the secondary school budget has dropped from 40% to 36%
- At £4,033 per pupil in 2021/22, **Peebles High School has the lowest devolved per pupil budget in the Scottish Borders**
- Of 128 secondary schools providing comparable data, six out of the ten schools with the largest real terms per pupil budget cuts between 2017/18 and 2021/22 were in the Scottish Borders, with **cuts ranging from 21% (Eyemouth) to 13% (Peebles)**
- Out of 150 secondary schools with comparable data, Peebles and Earlston are in the bottom 4 schools for per pupil budget in 2021/22
- SBC are under funding senior leadership positions at PHS (PHS has over twice the number of pupils per post than Jedburgh, Eyemouth and Selkirk)